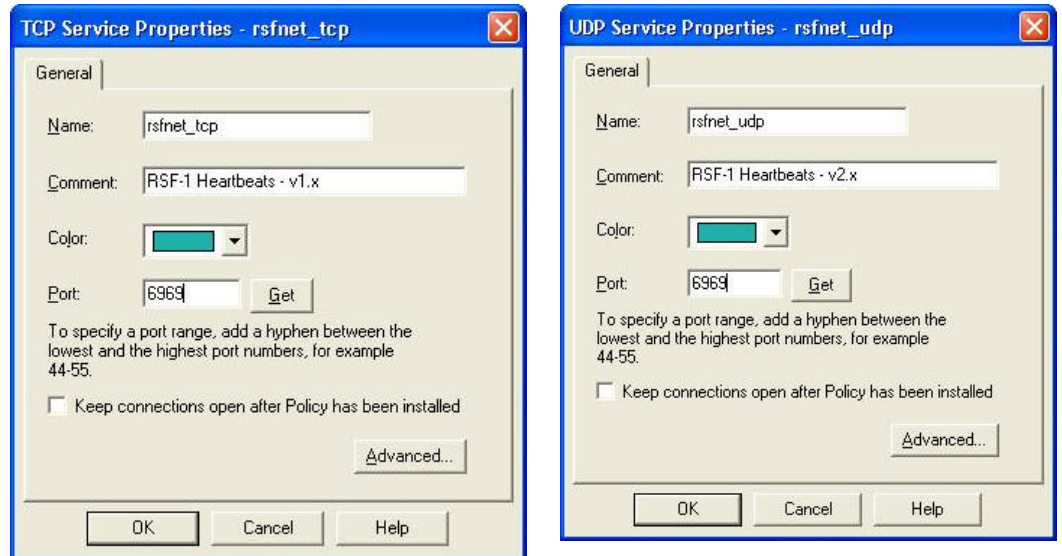
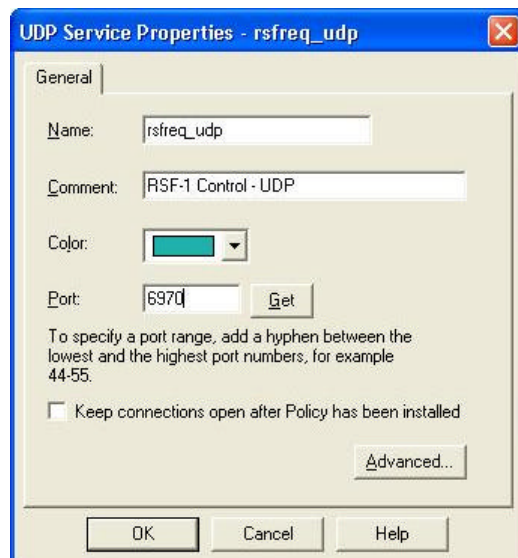


1. Create service definitions for ports required for RSF-1 communication (See 'Services' in the FireWall-1 *Administration Guide*, for more information).

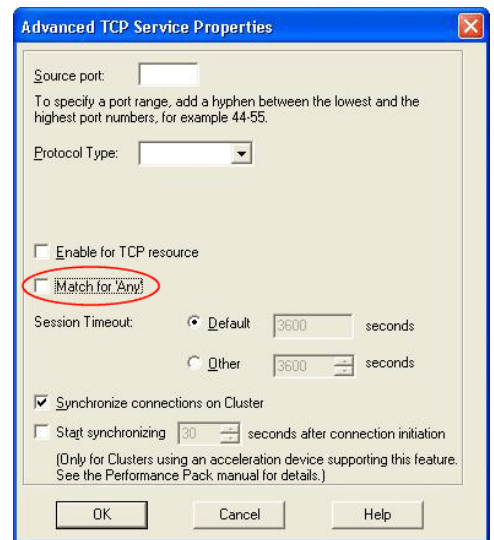
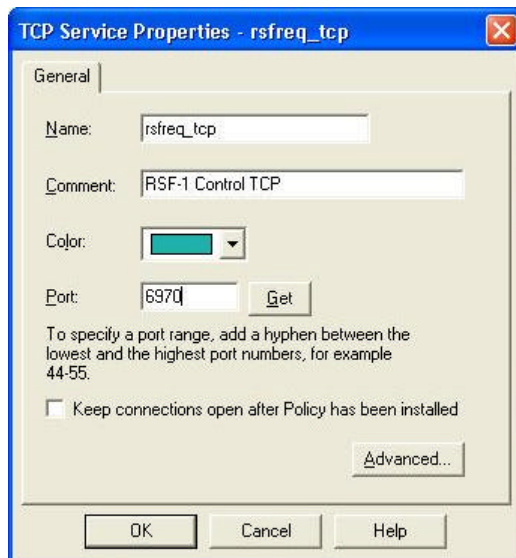
Service definitions for RSF-1 network based heartbeats;



Service definition for RSF-1 UDP based control;



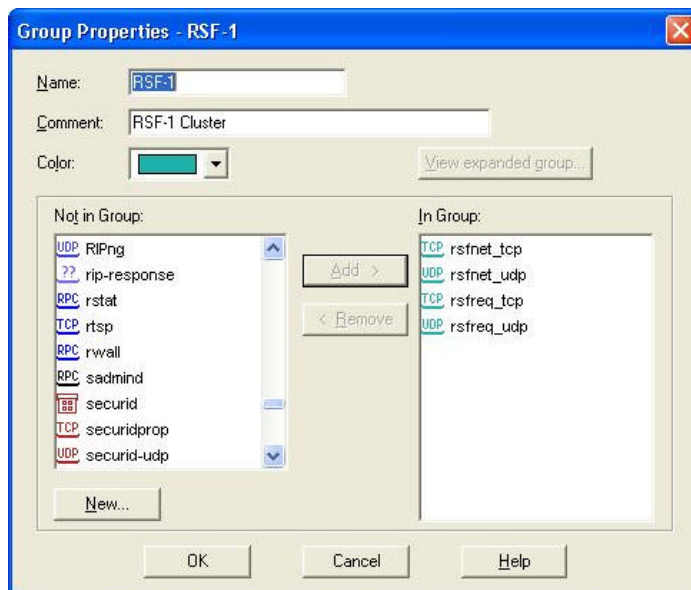
Service definition for RSF-1 TCP based control (requires advanced setting – uncheck 'Match for 'Any'');



This will generate the following warning and you should click 'Yes' to continue.



### Service group definition of RSF-1 protocols



2. Add a rule to allow RSF-1 traffic between the Cluster nodes.

Optionally, modify the rule to allow RSF-1 connections from a separate management console, as shown below with MyMgmtStations.

NO.	SOURCE	DESTINATION	VPN	SERVICE	ACTION
	Test MyMgmtStations	Test MyMgmtStations	* Any Traffic	RSF-1	accept

3. Add a rule for the fwmon process to test FireWall-1 packet filtering is operating correctly, suggested port is 'echo'. The rule 'Action' should be reject.

NO.	SOURCE	DESTINATION	VPN	SERVICE	ACTION
	Test remote_1	Test remote_1	* Any Traffic	echo	reject